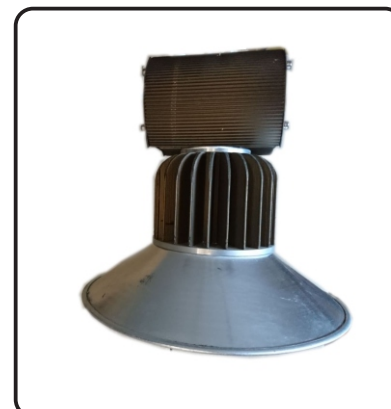


DATASHEET

SPECIFICATIONS OF LUMINARY.	
Luminaries wattage	30 Watt (+/- 5%)
Input Voltage	230 VAC
Input Frequency	50 Hz
Input Current	0.200A
Efficiency	>84%
Temperature Class	T6
IP Standard	IP 60
Total Weight	1.4 Kg
Starting Time	Instant (0.2 Sec)
Light Spreading Angle	90°/120°
Guarantee	2 Years on LED DRIVER
Guarantee	3 Years on COB LED
Guarantee	3 Years on FLUX/CCT/CRI

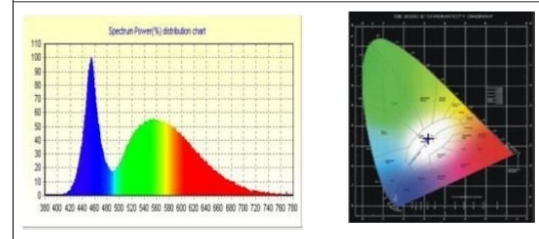
ORDERING CODE: MLB30MW



SPECIFICATIONS OF LED		MAKE : CITIZEN JAPAN
Model No	CLU-028-1204 V6	
LED type / No of LED Lamp	COB/ Single	
Total Lumen (As per simulation Tool)	3504	
Lumen Efficacy (Lm/ Watt)	136 lm/W @ 60° C LED Tc	
Lumen Efficacy (Lm/ Watt) (Incl. all loses)	117 lm/W @ 60° C LED Tc	
Color / Color Rendering index	CCT 6500K / RA 70	
SP Ratio	2.25	2.25
MAC ADAM ELIP STAGE	STEP 3	
LED -Wattage/Current/Voltage	26.3 W / 700 mA /37.6 V	
Lamp Life	1,60,000 Hours Min.	
Certifications / Reports	LM80/Photo Bio. Test	
Actual Tested Report	Actual Operating test Report for 63,000Hrs	
Identification Method	Unique Serial No. Printed on each Lamp	

CITIZEN
Micro HumanTech

LED SPECTRUM



SPECIFICATIONS OF LED DRIVER		MAKE - MEANWELL
Model No	APC-35-700	
Type of Driver	Constant Current	
Input Voltage Range	90 - 264 VAC	
Frequency Range	47 - 63 Hz	
Inrush current	Cold Start 70A	
Leakage current	0.25mA/ 277VAC	
Output Protection	Short Circuit, Over Voltage/ Current/ Temperature	
Withstand Voltage	I/P-O/P : 3.75KVAC	
Surge Protection	L-N : 2KV	
MTBF /DMTBF	518.9 Khrs min.	
Capacitor Life Cycle	57288 Hrs @ 40°C	

SPECIFICATIONS OF OPTICS	
Optics Type	Glass Lens
MOC of Optics	Borosilicate Glass
Optics Efficiency	96%

SPECIFICATIONS OF FIXTURE \ HEAT SINK	
Certification	IP 60
MOC Fixture	Aluminum Extrusion 6063
Junction Temperature -Tj	82°C
Case Temperature- Tc	60°C